



TAIMI 90° Swivel (60-2956) Seal Replacement Kit (60-2956-SK)

*Same procedure for TAIMI straight swivel (60-2955) and seal kit (60-2955-SK)

ITEMS INSIDE THE REBUILD KIT:

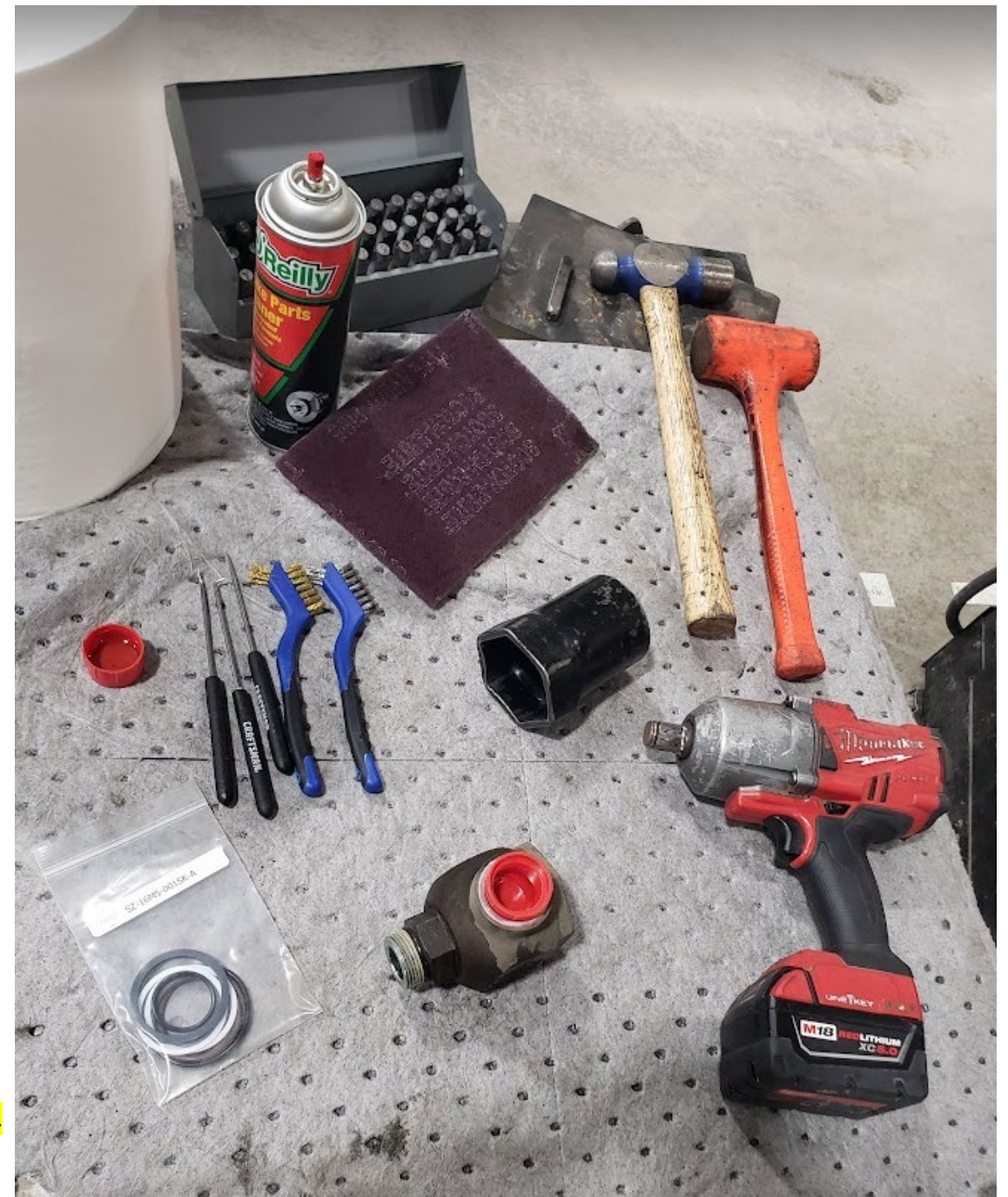
1. Thin black rubber rounded seal
2. Thick black flat seal
3. White composite seal (Qty 2)
4. Thin Brown rounded seal (Qty 2)
5. Thin Black rubber rounded seal



RECOMMENDED TOOLS & MATERIALS:

- Paper towels
- Brake clean
- Small wire brush
- Pick set
- Hammer
- 2 ½" socket
- Impact driver
- Scotch pad
- (¾" Drive) Torque wrench (Up to 490 lbs. ft.)
- Hydraulic oil
- Duck tape or protective caps
- Stamp set *optional*

*Proper use of PPE (gloves & eye protection) are highly recommended during this process.



CLEANING THE SWIVEL:

- With a wire brush, clean off any noticeable spots that have build up or hardened material on the swivel housing.
- Keep the ports of the swivel covered with tape or protective caps to keep debris out of the ports or threads when cleaning.
- **DO NOT** use a grinder or any excessively abrasive tools or material that will take off large amounts of material.

The swivel is coated with a triple zinc plating for added part durability. The removal of this may shorten the life expectancy of this part.



NOTE FOR REASSEMBLING:

***Wet the seals with hydraulic fluid for easier installation and proper seating during reassembly.**



OUTER HOUSING SEAL REMOVAL:

FIRST:

- Securely mount the swivel in the vice.
- With the 2 ½" socket and impact, remove the top nut from outer housing.



NEXT:

- Once the nut is off, check the part over for any excessive wear or areas of concern. *(Missing threads, rounded corners on the hex head, and damage to the sealing surface are all signs that this part needs replaced.)*
- Remove the old seal and replace with a new seal labeled **#1** from the kit.
- Ensure this seal is seated at the base of the nut as shown below.



INNER SWIVEL SEAL REMOVAL & REPLACEMENT:

- Once the top cap is removed, take the swivel out of vice and place it on the bench with the exposed end up.
- With the opened/exposed end facing upward, push downward (↓) on the swivel housing.
- The inner swivel should push upward (↑) and release from the housing to where another set of seals will be exposed.
- Use a scotch bright pad (or less abrasive material) to remove any material that may have built up around seal's surface.
- **DO NOT** use a grinder or wire wheel as this may take of too much material or damage the sealing surface.

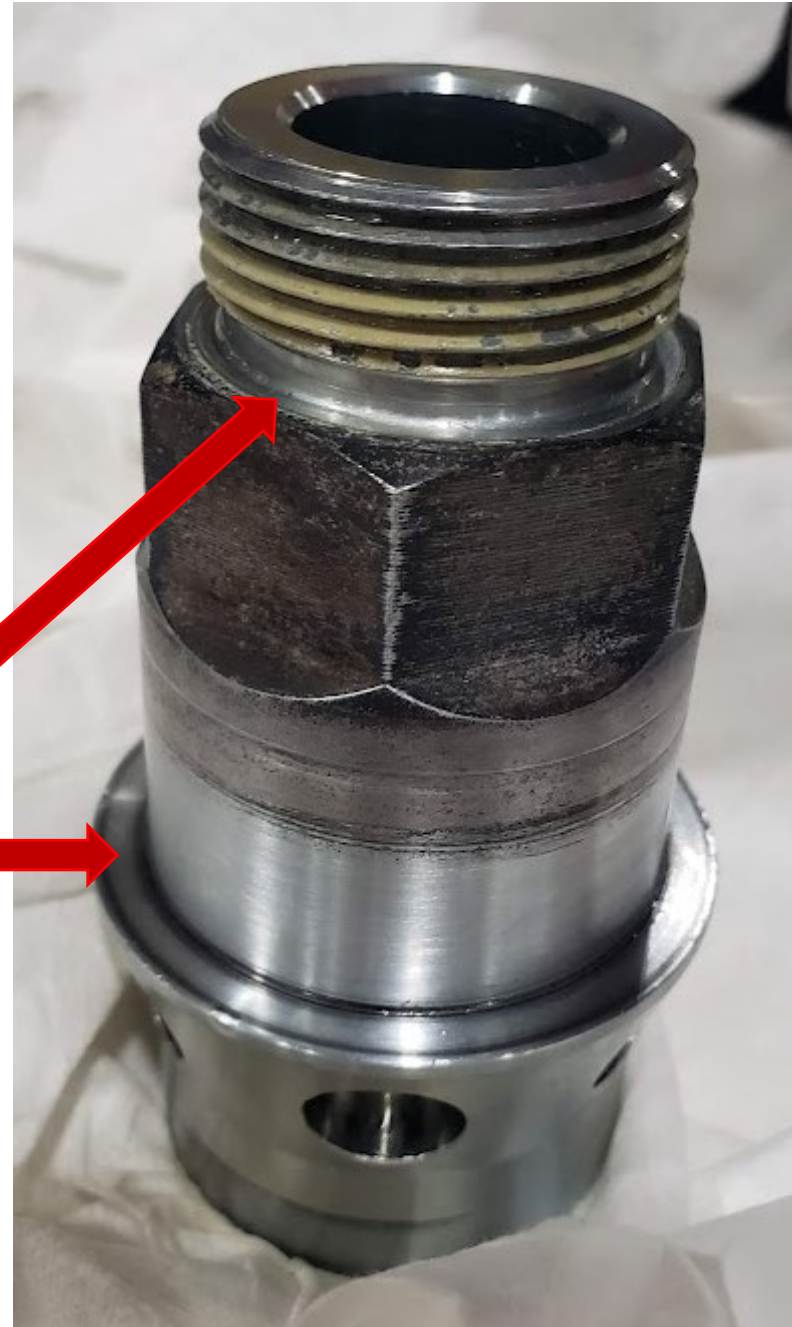


(Remove old seal
on inner swivel)



INNER SWIVEL SEAL REPLACEMENT:

- The example on the right shows an inner swivel that has been cleaned using a scotch bright pad and brake clean.
- Remove the round seal at the top of the inner swivel and replace it with the new seal labeled **#5** in kit.
- Replace the other larger round flat seal labeled **#2**.
- Use hydraulic oil to help with installation process.



(Rebuilt Inner Swivel)



OUTER HOUSING SEAL REMOVAL:

- Using a pick, remove the four used seals within the outer housing.
- Use scotch bright and a pick to clean the sealing surface inside of the outer swivel housing where the seals once was.
- Wash out all the debris using brake clean to ensure there is no contamination in the part.
- Check the overall condition of the housing and prep for reassembly.
- Replace the housing if there is *excessive pitting, stripped threads, or visible damage* to the part.



OUTER HOUSING SEAL REPLACEMENT:

- Replace the seals in the orientation you see in the image on the left.
- Work the seals around until seated flush inside the housing.
- Use hydraulic oil to help with the seal installation.

Seal Orientation:

- White **#3**
- Brown **#4**
- White **#3**
- Brown **#4**



OUTER & INNER SWIVEL ASSEMBLY:

- Insert the inner swivel back into the outer housing as shown in the far-left image below.
- Use firm pressure to pop the inner swivel into place within the outer housing of the swivel.
- The bottom of the inner swivel and outer housing should be flush, as shown in the image on the far-right below.



REASSEMBLY SPECS:

- Screw the outer swivel cap back onto housing, as shown in the left-hand image below.
- Place the part back in the vice and torque the cap down to **490 lbs. ft** using a torque wrench.
- Place the red protective caps (or tape back in place) over the ports to prevent any contamination into the newly assembled swivel until its ready for assembly.



REASSEMBLY:

- Once reassembly is complete, we recommend stamping the outer swivel to distinguish the number of times this part has been rebuilt.
- Mark each rebuild as shown in the right-hand image. It is not recommended to rebuild the swivel more than twice.





CONTACT US:

Phone: 319.653.5080 | 800.775.7448

Website: www.bazookafarmstar.com

Location: 800 E. 7th Street, Washington, IA 52535

Office Hours: 8 AM – 5 PM, Monday – Friday

Loading/Unloading Hours: 8 AM – 4 PM, Monday – Friday